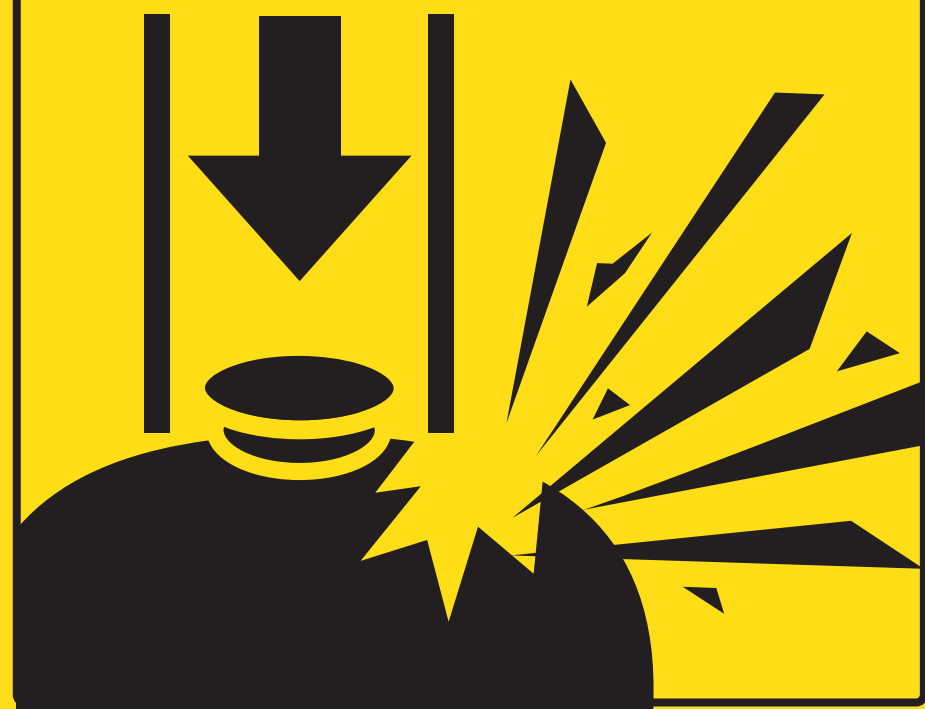




Downward and filling
pressure over 100 kg
DANGEROUS!

**Downward
pressure
over 100 kg
dangerous!**



**Leaning over
a keg is
dangerous!**



Dangerous!

- lean
- drop
- throw



Dangerous!



**A contact of kegs
with alkali is
dangerous!**



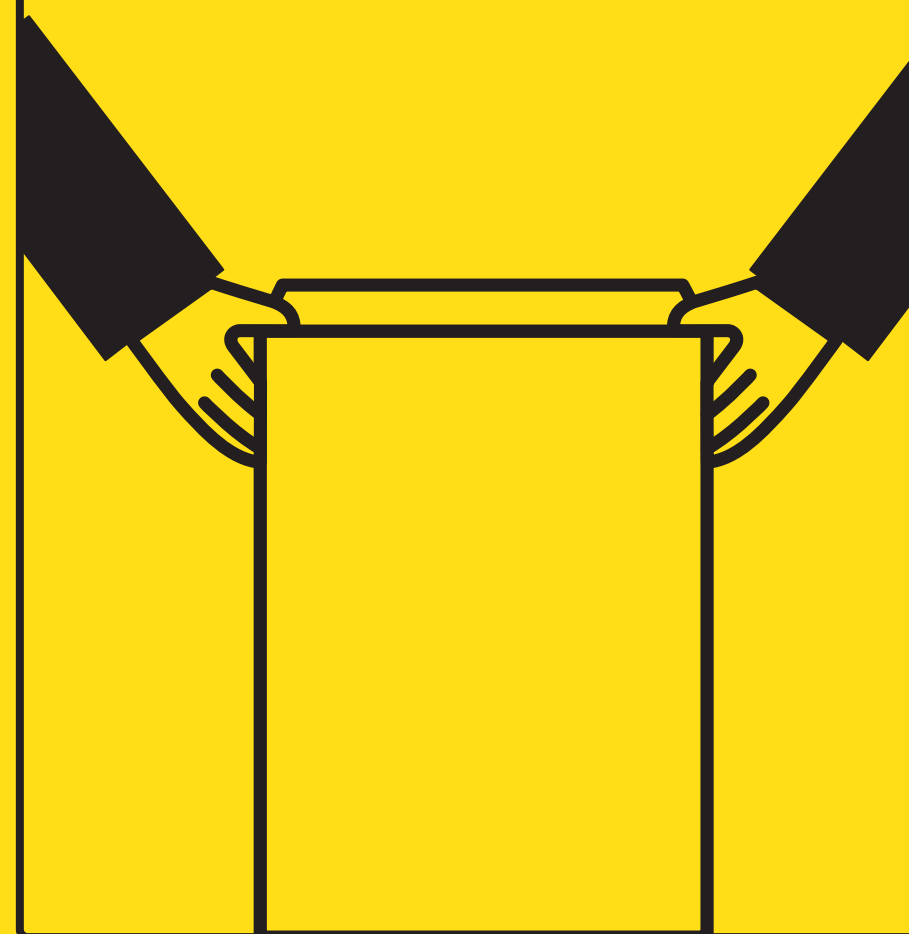
**CO₂ pressure
over 3 bar is
dangerous!**



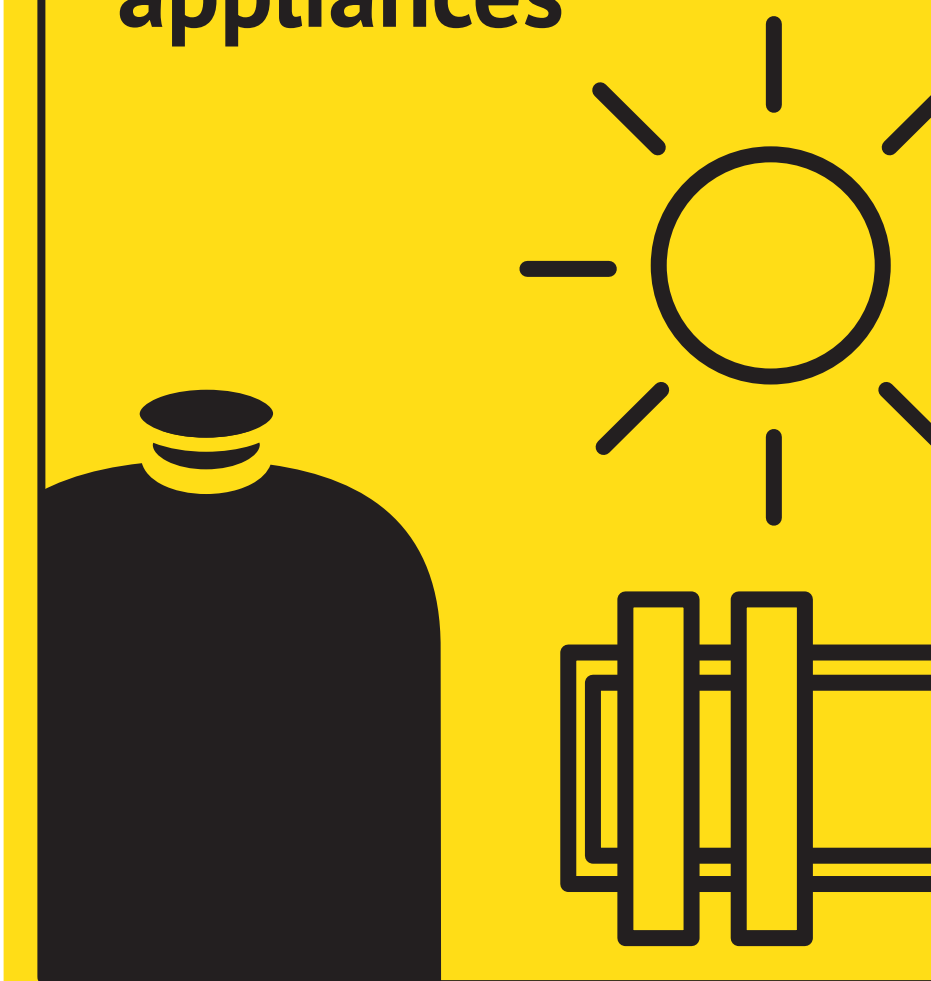
**Transportation is
possible only in
a box**



**Carry the box
together**



**Do not store in
the sun or near
heating
appliances**



**Do not move filled
kegs on a slippery
floor**

